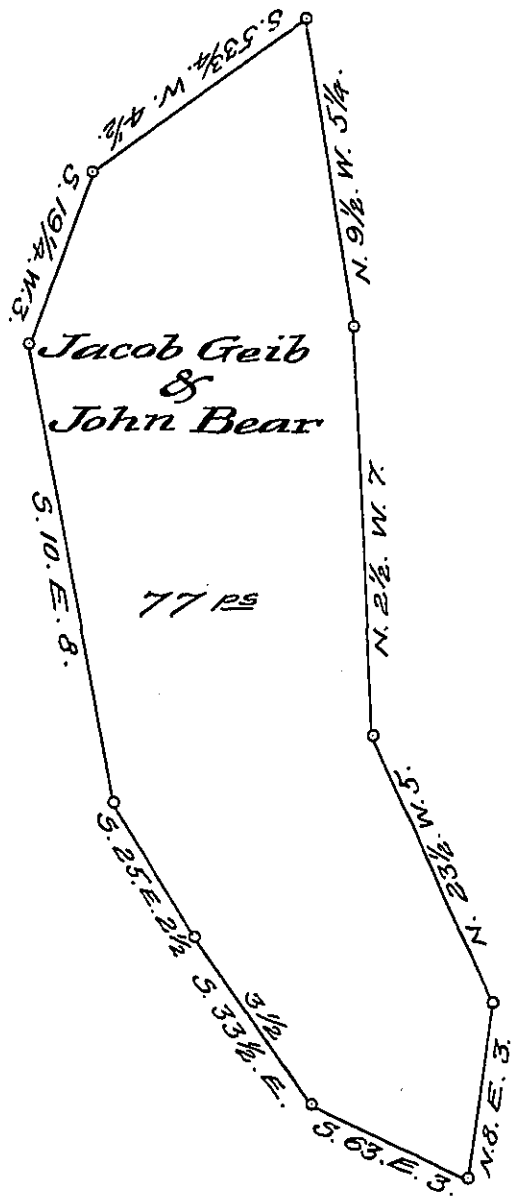


York County Shore



Lancaster County Shore

A Draught of Turkey Island situate in the River Susquehanna in Manor township Lancaster County in the Turkey hill falls opposite to the point of Turkey hill on the Lancaster shore and nearly opposite the mouth of Beaver run on the York shore containing seventy seven perches Strict measure surveyed in pursuance of a Warrant dated the 21st day of November A.D. 1811 granted to Jacob Geib and John Bear.

p^c Jacob Hibstman D.S.

To Jacob Spangler Esq. }
 Surveyor General }

IN TESTIMONY that the above is a copy of the original remaining on file in the Department of Internal Affairs of Pennsylvania, made conformably to an Act of Assembly approved the 16th day of February 1833, I have hereunto set my hand and caused the Seal of said Department to be affixed at Harrisburg, this thirteenth day of December 1907.

Henry Howell
 Secretary of Internal Affairs.